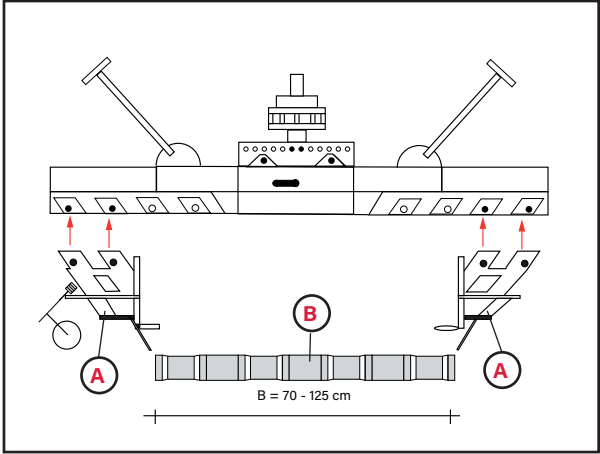


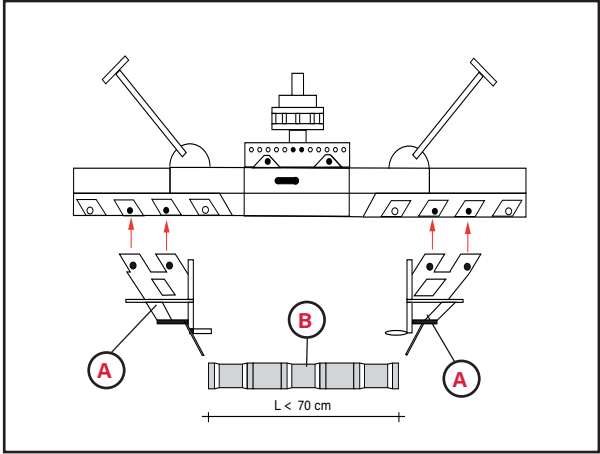
# Setting Paver Laying Grab S400-PV

Overview - does not replace the operation manual

## A Jaw Position

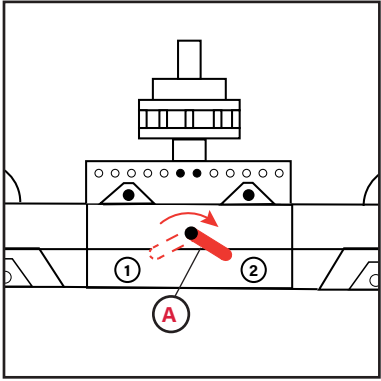


A = Paving Jaw B = Stone Layer (70-125 cm)



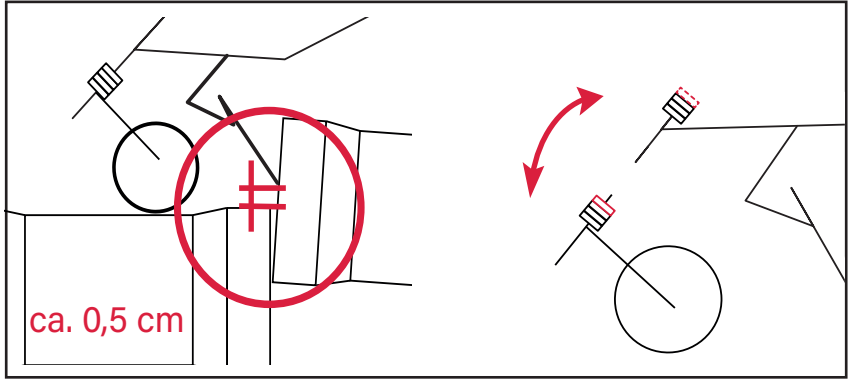
A = Paving Jaw B = Stone Layer (< 70 cm)

## B Clamp pressure



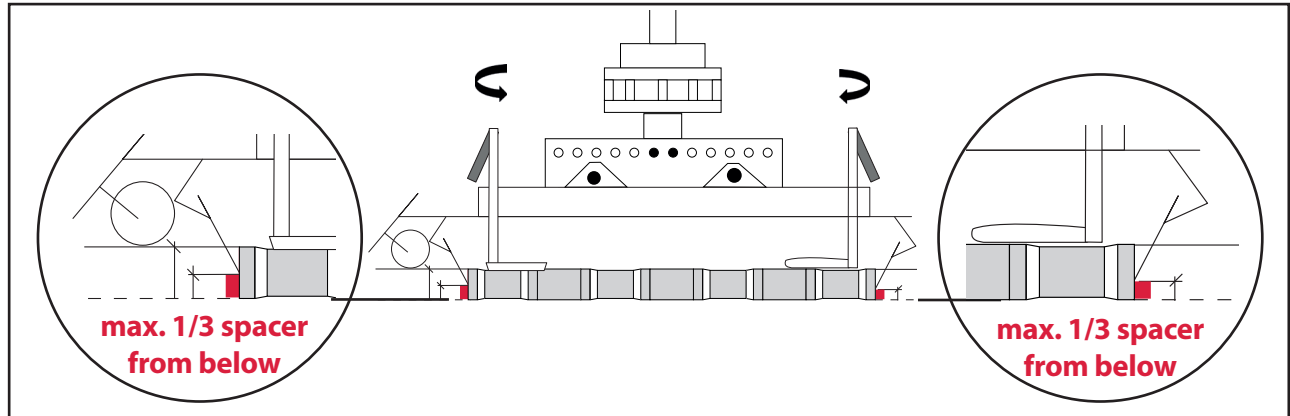
A = Lever to right (2)

## C Guiding Wheels



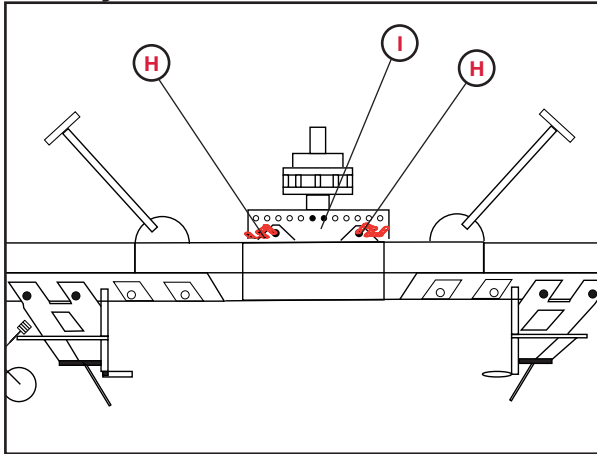
5 mm between clamping position and pavement surface

## C Gripping Depth: The more lower the gripping position, the more the stones are kept together



**D** Height Compensation -> Hanger Flange on Chain = bolted out (BA 2.5, S. 5)

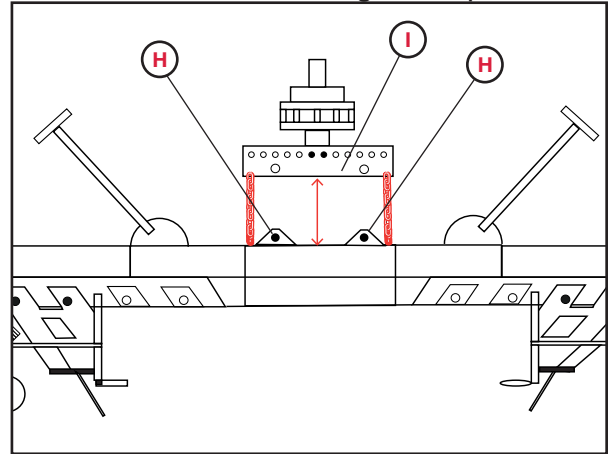
**Factory default**



H = Bolt, I = Hanger Flange

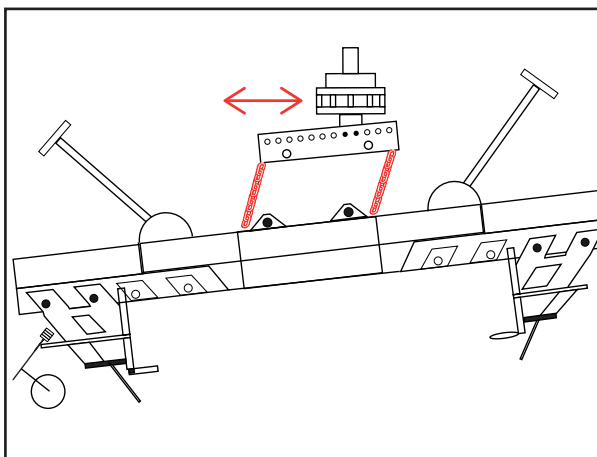
Hanger flange is directly connected with the Paver Laying Grab.

**Recommended: With height compensation**



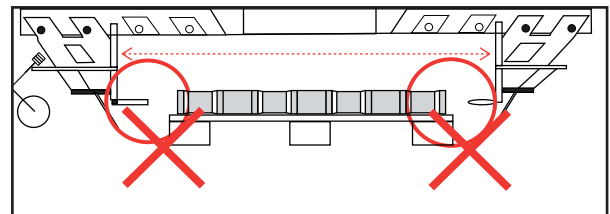
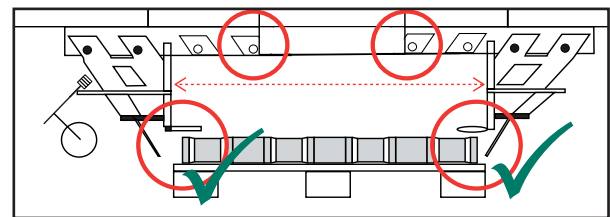
Before starting work bolt out the Hanger Flange

**E** Inclination



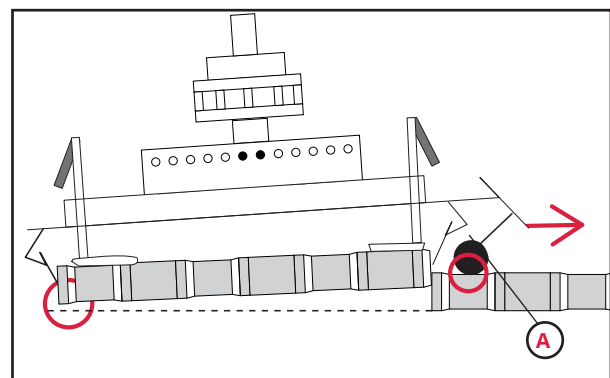
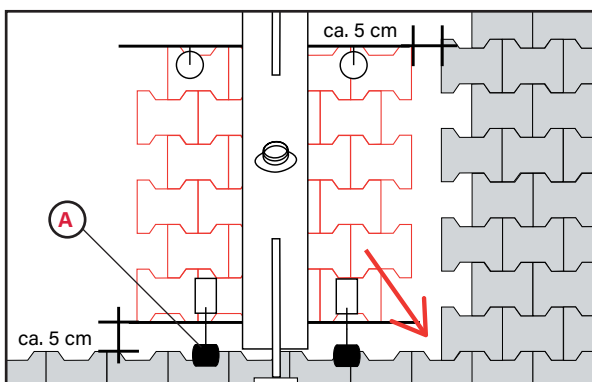
light inclination for laying

**F** Grabbing the Paving Layer



**Round Foot** must remain **above** the stone layer when gripping

**G** How to position the Guiding Wheel (A)



**+498024/47508-77** Just call for quick help.